

PEER 1 Hosting Clustering Solutions

High availability is easily attainable through clustering.

100% uptime – it's more than just adding servers

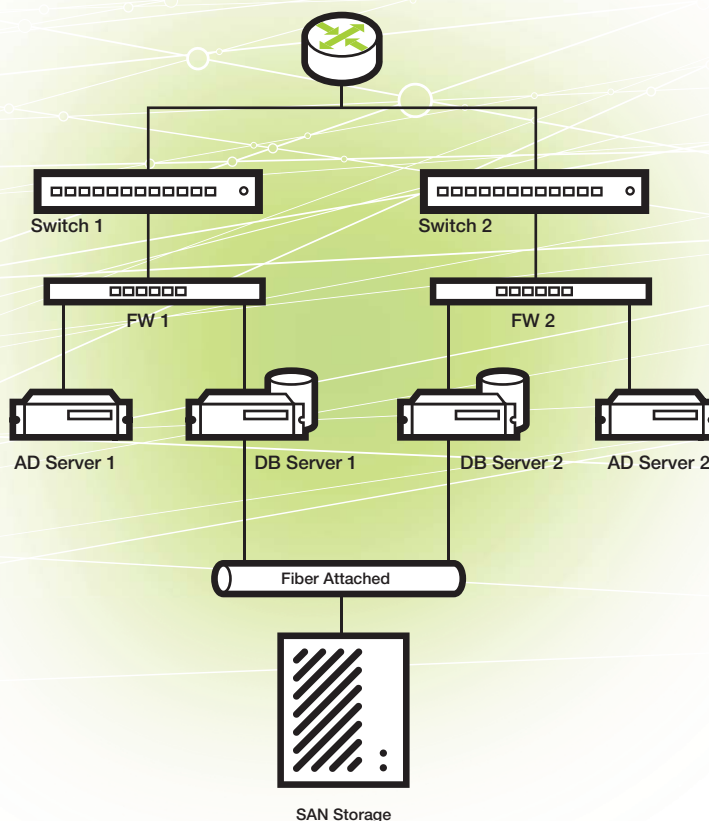
Hardware failure is a fact of life – even the best maintained systems eventually fall prey to wear and tear. When they do, it is a timely and costly affair to get your systems back online. What if you could be liberated from dependence on a single piece of hardware, to the point where the loss of an entire server is invisible to your customers? You can, if you plan ahead with one or more of PEER 1's cluster solutions.

WHAT IS A CLUSTER?

A cluster is made up of multiple servers that share common backend data storage. This provides fail-over in the event of a hardware, power, network, OS, or service outage on one server. While there are many types of clusters of varying levels of complexity, they all share this simple trait. Some of the clustered solutions offered by PEER 1 are outlined below.

MANAGED MICROSOFT SQL CLUSTERS

MSSQL clusters are comprised of two database servers, two Active Directory servers for authentication purposes, one or two dedicated firewalls, and fibre-attached SAN storage. As you can see from the diagram to the left, every piece of your database solution can be made redundant. This alleviates the worry of hardware failure at every point in the hardware chain. Even in the event of the loss of an entire switch, your database will seamlessly transfer to the available node, keeping your business online and keeping those orders rolling in.



RedHat Linux mySQL Clusters

mySQL clusters are comprised of two database servers, one or two dedicated firewalls, a dedicated APC MasterSwitch for power fencing, a Cluster Management node, and fibre-attached SAN storage. Similarly to the MSSQL Clusters, any failure on one node will immediately put the secondary node in control of your database, providing seamless service to your customers.

RedHat Linux Apache Web Farms

All that is great for your databases, but what about your Web servers? PEER 1's Apache web farms are the perfect way to add redundancy and speed to your web site, improving your customer experience while ensuring that your site is always available.

Benefits of Clustering

- Fully managed solution, from the ground up
Our highly-trained team of system administrators proactively monitors your cluster solution 24x7, so errors are addressed before they happen.
- Massive scalability means never running out of disk
Whether it's 73 Gigabytes or 73 Terabytes, PEER 1 has the ability to grow your solution with your business.
- Unparalleled reliability provided by EMC
Backed by EMC's Clarion SAN devices, the PEER 1 clustering infrastructure leverages the reliability and advanced technology of a world-leader in storage.
- Freedom from worry about hardware failure
By duplicating every aspect of your solution, no one piece of hardware can take you offline. Should hardware fail, your site can remain active while we replace it for you.
- Perform needed maintenance without downtime
Want to upgrade your hardware or code, but don't want to take your site down? No problem! Deploy changes to inactive nodes in your cluster solution, then bring them seamlessly back online.
- Improved response time
With multiple servers processing front-end requests and the speed of fiber-attached SAN disk, say goodbye to latency!

Pricing

Since we custom tailor your solution to meet your individual needs, pricing for clustering solutions can vary based on the level of complexity and high availability desired. Contact your PEER 1 Hosting Sales Representative for a quote!

Contact Us Today

- Call us at 1.866.579.9690
- Go to www.peer1.com and chat with one of our professional accounts staff.

Whether you are new to PEER 1 or an existing customer, we can help you integrate peace of mind into your business by designing you a clustered solution to meet your unique needs. Contact one of our knowledgeable PEER 1 Hosting Sales Representatives for a custom design.